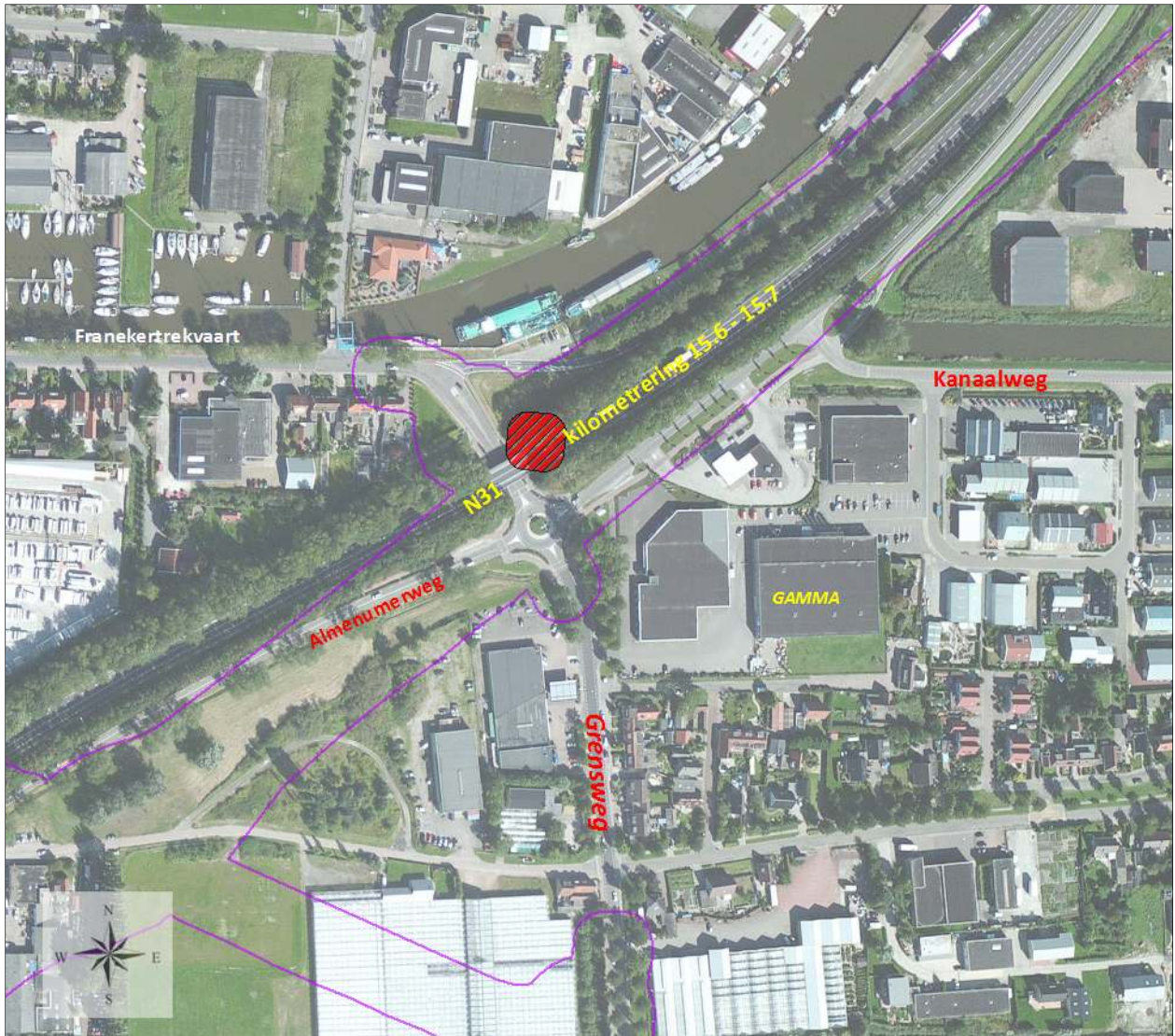




**Aanvulling ECG 037-011-SPD 20-07-2011:** Nadere aanduiding verdacht gebied aanduidingen "Traverse Harlingen"



**Fig. 1** Verdacht gebied ter hoogte van N31 (globale) kilometrerings 15.6 - 15.7 viaduct Grensweg.

**Legenda**

-  Onderzoeksbied
-  Verdacht gebied



**Fig. 2** Verdacht gebied ter hoogte van N31 (globale) kilometrering 14.9 - 15.0 nabij viaduct Oosterparkweg.

**Legenda**





-  Onderzoeksgebied
-  Verdacht gebied



Fig. 3 Verdacht gebied ter hoogte van N31 (globale) kilometrering 14.6 - 14.7 viaduct Kimswerderweg.

**Legenda**

-  Onderzoeksgebied
-  Verdacht gebied